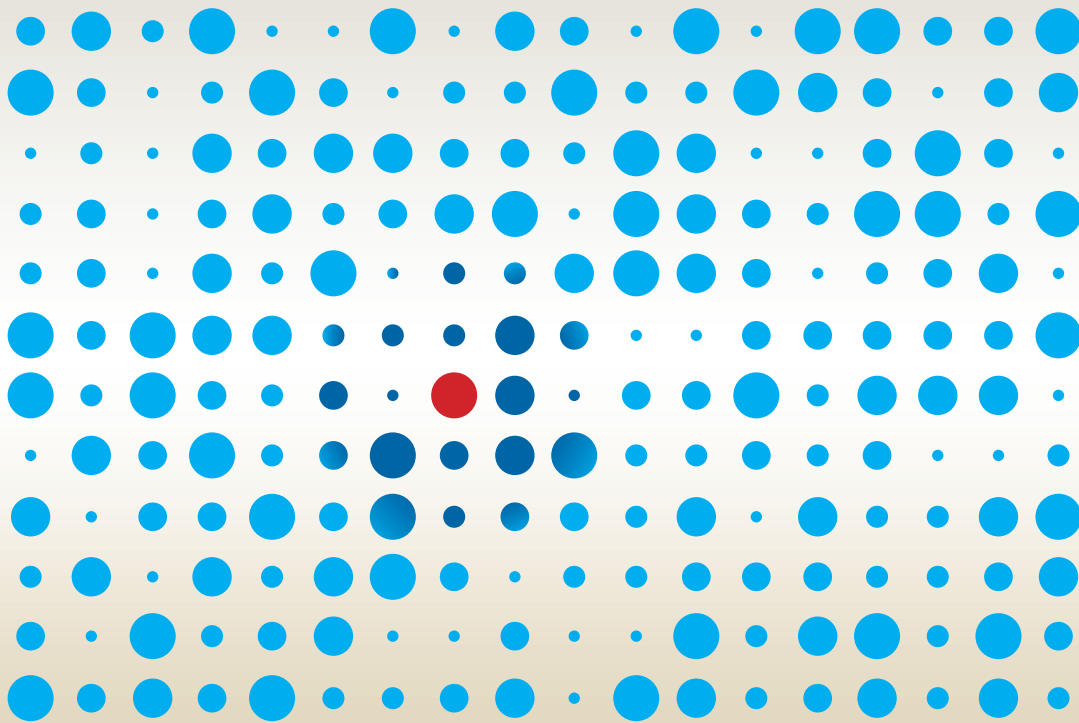


Clinical Epidemiology Institute

A practical introduction to critical appraisal skills and evidence-based practice and policy for clinicians, decision-makers, industry representatives and novice researchers

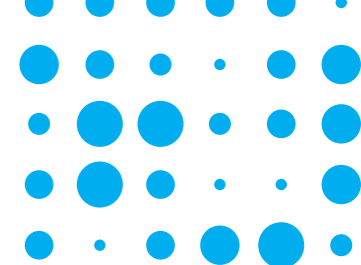


November 10 - 14, 2008



**Health Policy,
Management
and Evaluation**

University of Toronto
Toronto, Ontario



Who should take this course?

- Clinicians in academic centres or the community who are collaborating in research studies and would like a richer understanding of clinical epidemiology
- Clinicians and research coordinators interested in acquiring basic clinical research skills
- Decision-makers within government, LHINs, and health service providers who need critical appraisal skills to read and interpret evidence used in decision making
- Individuals involved in research, regulatory affairs and outcomes assessment within the pharmaceutical and biotechnology industries who need clinical appraisal skills to evaluate studies, including post-marketing surveillance

Key Features

- Five-day on-campus program
- Internationally-renowned clinical epidemiology faculty from the Department of Health Policy, Management and Evaluation (HPME), University of Toronto
- Interactive learning approach that makes use of lectures, interactive sessions, and small-group learning

Outcomes

Participants will be able to use the techniques of evidence-based medicine to critically appraise clinical research. Specifically, they will be able to:

- Understand and appraise various study designs
- Understand basic statistical concepts used to analyze quantitative health data
- Evaluate the usefulness of a diagnostic test using various measures
- Understand systematic reviews, meta analyses and how data can be synthesized to determine clinical practice guidelines
- Construct a focused research question as the first step in study design
- Conduct efficient and effective medical literature searches

If you currently struggle through the methodology section of the research articles that land on your desk – this Institute will be invaluable. The program combines an introduction to the fundamentals of research methodology with the practical skills of critical appraisal. The emphasis is on clear, accessible information that can be applied immediately.

Ahmed Bayoumi, MD, MSc

Director, Clinical Epidemiology Program, HPME

Date and Location

November 10 – 14, 2008

Health Sciences Building
University of Toronto
155 College Street

Curriculum

- An introduction to the principles and tools of evidence-based medicine
- Understanding randomized controlled trials

Hands on sessions

- Power searching: techniques to enhance your literature search (concurrent session)
- Using administrative databases for research (concurrent session)
- Developing your critical appraisal skills: A facilitated discussion and review of a randomized controlled trial

- Bias and its impact on study validity

- Clinical prediction rules: when and how to use them

- Basic and advanced statistics: demystifying p values, confidence intervals, odds ratios, relative risk, survival analysis and regression analysis (concurrent sessions)

Hands on session

- Developing your critical appraisal skills: A facilitated discussion and review of a clinical prediction rule study

- Understanding methodology: cohort studies, case-control studies and cross-sectional surveys

Hands on sessions

- Developing a concept sheet: the first step in study design
- Developing your critical appraisal skills: A facilitated discussion and review of an observational cohort study

- Measuring results: patient-centred outcomes and quality of life (concurrent session)

- Decision analysis: examining difficult decisions and tradeoffs (concurrent session)

- Assessing diagnostic tests: sensitivity/specificity, likelihood ratios and advanced methods (concurrent session)

- Health economics: how to think about costs and benefits in health care (concurrent session)

Hands on sessions

- Presentation and review of concept sheets
- Developing your critical appraisal skills: A facilitated discussion and review of a case control study

- Summarizing and synthesizing evidence: practice guidelines, systematic reviews, meta analysis

- Effective approaches to knowledge translation

Hands on session

- Developing your critical appraisal skills: A facilitated discussion and review of a systematic review and meta-analysis

For detailed course descriptions, visit www.hpme.utoronto.ca/about/conted/cei/curriculum.htm

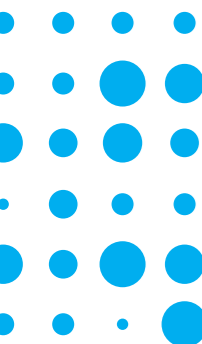
day 1

day 2

day 3

day 4

day 5



Faculty

The Institute features leading faculty from the Department of Health Policy, Management and Evaluation including:

Ahmed Bayoumi, MD, MSc	Director, Clinical Epidemiology, Health Policy, Management and Evaluation, University of Toronto
Joseph Beyene, MSc, PhD	Assistant Professor, University of Toronto
David Cassidy, DrMedSc, PhD	Professor, University of Toronto
Brian Feldman, MD, MSc	Head of the Rheumatology Department, Hospital for Sick Children
David Fisman, MD, MPH, FRCPC	Assistant Professor, University of Toronto
Gillian Hawker, MD, MSc	Physician-in-Chief, Women's College Hospital
Elizabeth Lin, PhD	Research Scientist, Centre for Addiction and Mental Health
Charmaine Lok, MD, MSc, FRCPC	Assistant Professor, University of Toronto
Donald Redelmeier, MD, MS	Director, Clinical Epidemiology Unit, Sunnybrook Health Sciences Centre
Jolie Ringash, MD, MSc	Associate Director, Health Policy, Management and Evaluation, University of Toronto
Prakesh Shah, MD, MSc	Assistant Professor, University of Toronto
Sharon Straus, HBSc, MD, MSc	Associate Professor, University of Toronto
George Tomlinson, MSc, PhD	Associate Professor, University of Toronto
Elizabeth Uleryk, BA, MLS	Director of the Hospital for Sick Children's Library and Archives
David Urbach, MD, MSc	Tyco Chair of Minimally Invasive Surgery at the University Health Network

For a full faculty listing, visit www.hpme.utoronto.ca/about/conted/cei/faculty.htm

Accreditation

This program meets the accreditation criteria of The College of Family Physicians of Canada and has been accredited for up to 31 Mainpro-M1 credits.

This event is an Accredited Group Learning Activity (Section 1) as defined by the Maintenance of Certification program of The Royal College of Physicians and Surgeons of Canada, approved by the University of Toronto for 31 section 1 credits.

Fees and Registration

Tuition Fee: \$3000

Registration fee includes all study materials, continental breakfasts, lunches and one dinner.

Please register online at www.hpme.utoronto.ca/about/conted/cei/ceireg08.htm

Registrations must be received no later than October 10, 2008.

Maximum registration: 30 participants. Registrations are accepted on a first come basis. Under exceptional circumstances financial assistance may be available.

Accommodation

A limited number of premier guest rooms are available at the Delta Chelsea Hotel, 33 Gerrard Street West, Toronto at a special rate of \$142.00 (plus taxes) per night. Reserve by October 10 directly with the hotel. Call 1-800-243-5732 and specify you are with the Clinical Epidemiology Institute.

For More Information

Please contact:

Jennifer James
Department of Health Policy,
Management and Evaluation
clinepi.courses@utoronto.ca
Telephone: 416-946-8277
Fax: 416-978-7350

The growth of evidence-based medicine has placed new demands on physicians, decision-makers and those working in the health industry to be able to read, interpret and assess study findings. The ability to assess the validity and value of research studies has become an essential skill for clinicians and policy-makers.

Allan S. Detsky, MD, PhD, FRCPC

Professor, HPME and Senior Scientist, Toronto General Research Institute